

BILLY BISHOP TORONTO CITY AIRPORT PEDESTRIAN TUNNEL PROGRESS UPDATE

PORTS
TORONTO

The Billy Bishop Toronto City Airport pedestrian tunnel continues to make great progress. Read below to learn what's new, what's next and what to expect with this exciting project.

WHAT'S NEW

Installation of glass for the windows in the mainland pavilion is 95 per cent complete, and both the mainland and island-side cranes have been removed from the site. Final finishes on the mainland brickwork are nearing completion and installation of the mainland elevators has begun. The concrete in the island-side elevator shaft is complete, allowing for the elevator installation to begin. All escalators have now been lowered into place. Installation of floor tile is beginning inside the island atrium and the tunnel.

WHAT'S NEXT

The next phase of tunnel construction includes completion of the moving sidewalks, continued installation of the escalators, hook-up of the remaining City of Toronto water and sewer mains, installation of the architectural finishes, completion of the tunnel's connecting terminal structures and landscaping.

WHAT TO EXPECT

The use of heavy machinery and deliveries to and from the site are necessary and may result in construction-related noise. However, the primary hours of construction will continue to be scheduled within the operating hours of the airport. During the final phase of the tunnel construction, there have been changes to the ferry loading lanes and passenger drop-off areas that will remain until the opening of the tunnel.

WHEN WILL IT OPEN

The tunnel is making great progress and PCL Construction, the company responsible for building the tunnel, continues to achieve milestones such as the placement of escalators that, once installed, will transport travellers the 10 storeys from tunnel to surface. PCL is confirming the completion schedule for the project and is targeting late spring for the work to be complete. Once PortsToronto is provided with more information in this regard we'll be sure to pass it along.

ABOUT THE PROJECT

The Billy Bishop Airport pedestrian tunnel construction began in March 2012 and is expected to be completed in late spring 2015. The tunnel is being constructed on behalf of PortsToronto using a P3 model with construction partners Forum Equity Partners and PCL. When it is complete the tunnel will offer an efficient and convenient access route for travellers. In addition, the project is facilitating the installation of water and sewer services between the mainland and the island on behalf of the City of Toronto.

When it opens, the pedestrian tunnel will have four moving sidewalks travelling at 2.3 kilometres per hour. From a bank of six elevators on the mainland side, travellers will descend 100-feet to access the tunnel and travel along the passageway to escalators, which lead to the airport's check-in area. The complete journey will take less than six minutes, and will dramatically improve passenger flows.

POWERED BY:



For more information on the project, visit PortsToronto.com or bbtcatunnelproject.ca. Follow PortsToronto on Twitter and Facebook for regular updates.

For more urgent construction issues, please contact (416) 777-0276.



@PortsToronto



PortsToronto



PortsToronto



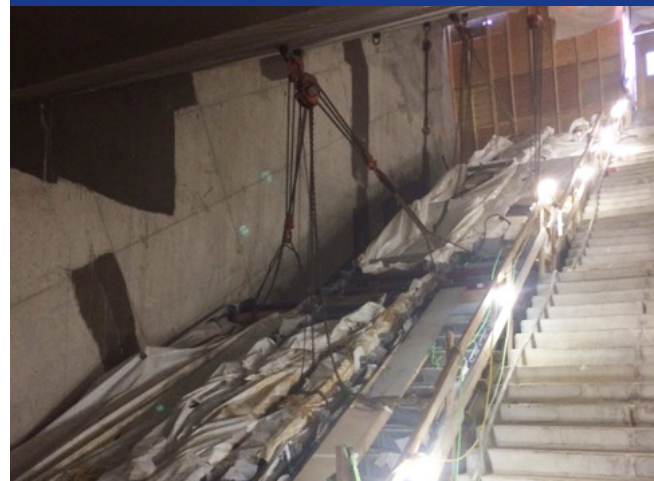
Interior of mainland pavilion



PortsToronto CEO Geoffrey Wilson and Director of Infrastructure Ken Lundy take a stroll on one of the tunnel's moving sidewalks



Tile installation underway inside the pedestrian tunnel



Escalators lowered into place. Once installed, they will transport travellers the 10 storeys from tunnel to surface...and back again.