

MEETING MINUTES

Topic: Tunnel Construction Committee Meeting Number 4 – September 25, 2012

Location: Harbourfront Community Centre

Attendees:

| | |
|-----------------|---|
| Greg Kitscha | Forum Equity Partners Inc. |
| Russ Martin | PCL |
| Ken Lundy | Toronto Port Authority |
| Gene Cabral | Toronto Port Authority |
| Charlotte Sam | St. Stephen's Waterfront Daycare |
| Mario Silva | Toronto District School Board |
| Rudy Pirosko | Ministry of the Environment |
| Barb Lachapelle | Toronto Public Health |
| Rudy Pirosko | Ministry of the Environment |
| Abby Salb | Senes Consultants |
| Paul Kirby | Senes Consultants |
| Hal Beck | Bathurst Quay Neighbourhood Association |
| Henry Piersig | Bathurst Quay Neighbourhood Association |

Distribution:

| | |
|----------------------|---|
| Attendees | |
| Ken Shier | PCL |
| Karen Barnes | The Waterfront School |
| Jen Chan | Councillor Vaughan's Office |
| John Horne | Bathurst Quay Neighbourhood Association |
| Leona Rodall | Harbourfront Community Centre |
| Gabriela Kurzydowski | City School |
| Kathryn Exner | The Waterfront School Parent Council |
| Rod Adams | Ministry of the Environment |
| Paula Budhlall | The Waterfront School |
| Joseph Svec | Bathurst Quay Neighborhood Association |
| Beverly Dywan | City School Parent Council |
| Joan Prowse | Bathurst Quay Neighborhood Association |
| Jackie Garrison | The Waterfront School Parent Council |

Date: July 25, 2012 (19:00 – 20:30)

ACTION ITEMS

| No. | Action | Responsible | Status / TCD |
|-----|---|-------------|--------------|
| 1 | Presentations to be circulated to all attendees following CPLC Meeting. | Forum | Complete |

MEETING MINUTES: “QUESTIONS & DISCUSSION”

Question: What is the size and nature of the various services that were relocated on the island?

Answer: The following services were relocated on the island:

- Sanitary Forcemain 100mm & 300mm
- Watermain 150mm
- Storm Pipe 100mm & 300mm
- Fire Protection Watermain 150mm

Question: What was the duration of the overnight work that occurred in the late summer that pertained to the relocation of the island side utilities?

Answer: Approximately two weeks (although not continuous).

Question: Has and will the two-week look ahead be updated to include notices relating to potential overnight work?

Answer: Yes.

Question: Has and will the two-week look ahead be updated to include notices relating to changes in the volume of excavated material being produced?

Answer: Yes.

Question: Has the Ministry of the Environment come to the site to monitor the conditions for noise / air quality?

Answer: Yes. The MOE visited the site over the summer months approximately three times per week.

Question: Will any of the island side excavation “spoil” be deposited on the island side?

Answer: Potentially. The TPA, Forum and PCL are continuing to consider the potential for depositing excavated soil and shale on a new perimeter road and in the marine exclusion zone respectively.

Question: Who does PCL’s aerial photos?

Answer: Geoff Grenville
Kalloon Photography
310 Pine Avenue, Oakville, ON L6J 2J9
(905) 849-1339

Question: When will the new parking lot be constructed (immediately south of the south-east corner of the Harbourfront School)?

Answer: Construction is planned to commence on this parking lot in October 2012 and the lot is expected to be operational in November 2012.

Question: What was the nature of the work performed by Senes Consultants with respect to air quality monitoring?

Answer: An air quality monitoring plan was established in coordination with the Ministry of the Environment, Toronto Public Health and the Waterfront School. In particular the plan was established to address the concerns regarding dust from the batching assembly. Two sets of approximately 14 samples each were collected (24 hour sampling period) over two one-month periods. The earlier period was completed prior to the operation of the batching assembly, but while the construction effort was underway. This period provided a baseline data set. The later period was completed after commencement of the operation of the batching assembly, and while the construction effort was underway. This period provided a comparison set of data to the baseline data set. The PM10 (particulate matter smaller than 10 micron) concentrations were ascertained by collecting and weighing PM10 particulate. The data collected to date is very positive and infers that the PM10 air concentrations at the school are not materially impacted by the operation of the batching assembly.

Question: What was the nature of the work performed by Senes Consultants with respect to noise monitoring?

Answer: A noise monitoring plan was established in coordination with the Ministry of the Environment, Toronto Public Health and the Waterfront School. The intent of the monitoring plan was to assess the effect of the operation of a cement batching assembly on the ambient noise conditions at the Toronto Waterfront School. Two sets of continuous data (5-6 days each) were recorded (June 8-13 and August 14-20). The first set was completed prior to the operation of the batching assembly, which provided a “baseline” data set. The later set was completed after commencement of the operation of the batching assembly, which provided a comparison set of data to the baseline data set. Major elements of the construction Project were already underway during both monitoring periods. The results of the testing indicated that there was a high degree of variability in hourly noise levels at the Waterfront School (58 – 74 Leq_(1hr), dBA). In addition, the study confirms the difficulty in distinguishing the batching plant’s operation from the balance of the construction site or the ambient background noise. Finally, it is understood from the study that the batching assembly may contribute between approximately 1-3 dB to the ambient noise levels. However, this contribution is much less than the variability in background noise levels when the cement batch assembly was not operating.

Question: Describe the activity of the batching assembly.

Answer: The batching assembly is used throughout the day to batch discrete loads of concrete. A batch occurs on average between 1-2x per hour (depending on demand for concrete). Each batch runs for approximately 6 minutes.

ATTACHMENTS

1. Meeting Presentation Slide Deck

NEXT MEETING:

November 27, 2012 – 7:00 PM

Harbourfront Community Centre

The Billy Bishop Toronto City Airport Tunnel Project

Tunnel Construction Committee Meeting #4

Tuesday September 25, 2012

- ### Agenda
- | | |
|---------------------------|-------------|
| 1. Review of Minutes | Forum |
| 2. Two Month Look Back | Forum & PCL |
| 3. Two Month Look Ahead | Forum & PCL |
| 4. Questions & Discussion | All |
| 5. Next Meeting | TPA |

1. Review of Minutes

MEETING MINUTES FORUM

Topic: Construction Period Update Committee Meeting Number 4 - July 25, 2012

Location: Harbourfront Community Centre

Attendees:

| | |
|---------------|---|
| Greg Ritchie | Forum Facility Partners Inc. |
| Ray Chan | TPA |
| Chia-Lien Sun | St. Stephen's Methodist Diocese |
| Don Chan | Canadian Malting Culture |
| John Harris | Bayshore Quay Neighbourhood Association |
| Marko Stokic | Harbourfront Community Centre |
| Ray Ritchie | Harbourfront Community Centre |
| Ray Looze | Harbourfront Authority |
| Lee Hsieh | Harbourfront Neighbourhood Association |

Distribution:

| | |
|----------------|--|
| Karen Barakat | The Warehouse School |
| Gregory Koffel | Harbourfront Community Centre |
| Gregory Koffel | City of TPA |
| Ray Chan | Forum Facility Partners Inc. |
| Ray Chan | TPA |
| Ray Chan | The Warehouse School Parent Council |
| Ray Chan | St. Stephen's Methodist |
| Ray Chan | Ministry of the Environment |
| Steve Carter | Harbourfront Authority |
| Paula Mitchell | The Warehouse School |
| Gregory Koffel | Harbourfront Community Centre |
| Ray Chan | City School Parent Council |
| John Harris | Harbourfront Neighbourhood Association |
| John Harris | The Warehouse School Parent Council |

Date: July 25, 2012 (12:00 - 01:00)

ACTION ITEMS

| No. | Date | Responsible | Status |
|-----|------|-------------|--------|
| 1. | | | |

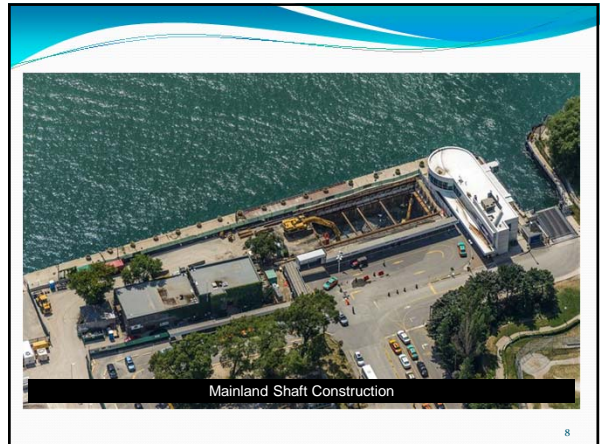
- ### 2. Two Month Look-Back
- Completed the temporary paving work to relocate the turning circle onto the Canada Malting Site.
 - Completed the utility relocations on the mainland and island.
 - Nearly complete the shaft construction on the mainland.
 - Begun shaft construction on the island.





Mainland Shaft Construction

7



Mainland Shaft Construction

8



Mainland Shaft Construction

9



Island Equipment Set Up

10



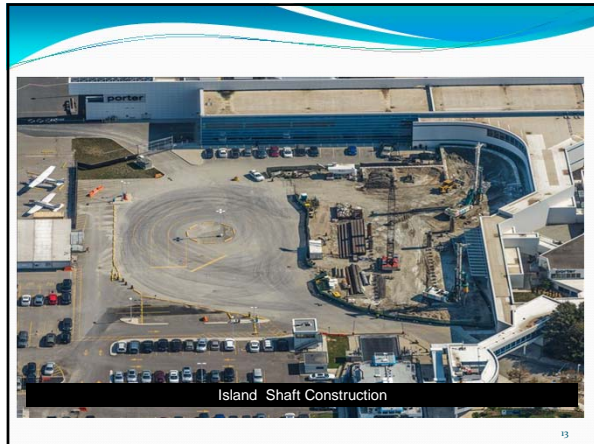
Island Shaft Construction

11

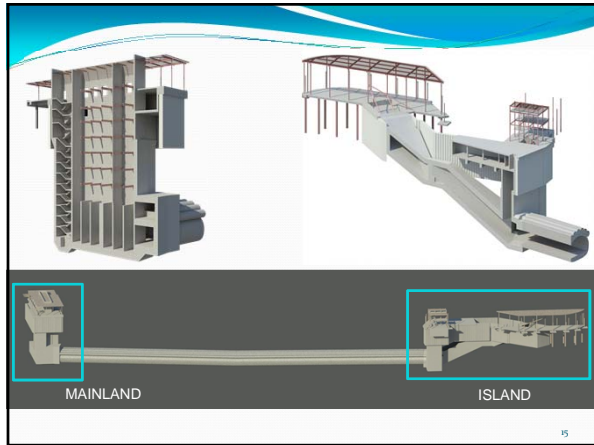


Island Shaft Construction

12



- ### 3. Two Month Look-Ahead
1. Complete shaft construction (mainland and island).
 2. Construction of "drift tunnels"
(October 2012 to January 2013)
 3. Construction of the "pedestrian tunnel"
(January 2012 to Summer 2013)
 4. Tunnel Fit-Out and Construction of Buildings
(Summer 2013 to Spring 2014)
- 14





5. Questions & Discussion

1. Review of Project website and Hotline questions / comments.
2. Open floor for questions and answers / discussion.

20

7. Next Meeting

4. Tuesday November 27th, 2012

After which we propose the following regular meetings on the 4th Tuesday of every 2nd month:

5. Tuesday January 29th, 2013
6. Tuesday March 26th, 2013
7. Tuesday May 28th, 2013
8. Tuesday July 30th, 2013
9. Tuesday September 24th, 2013
10. Tuesday November 26th, 2013
11. Tuesday January 28th, 2014

21